

ANNEXURE XV

MINIMUM HOSTEL FACILITY AVAILABLE AS PER MSR

Sr. No	Facility	Available (YES/ NO)	REMARK BRIEF AND SPECIFIC
1.	There should be a separate hostel for the male and female students.	Yes	Adequate
2.	Pantry One pantry on each floor should be provided. It should have water cooler and heating arrangements	Yes	Adequate
3.	Washing & Ironing Space Facility for drying and ironing clothes should be provided on each floor.	Yes	Adequate
4.	Warden's Room Warden should be provided with a separate office room besides her residential accommodation. Intercom facility with College & hospital shall be provided.	Yes	Adequate
5.	Telephone Telephone facility accessible to students in emergency situation shall be made available.	Yes	Adequate
6.	Emergency alarm system in Hostel	Yes	Adequate
7.	Canteen There should be provision for a canteen for the students, their guests, and all other staff members	Yes	Adequate
8.	FDA License Verify Canteen Facility is monitored as per MUHS Circular No. 18/2019 dated – 19/03/2019)		Adequate
9.	Transport From Hostel to College / Hospital	Yes	Adequate
10.	C.C.T.V Cameras in Hostel ,	Yes	Adequate
11.	Security Facility in Hostel	Yes	Adequate
12.	Safe Drinking Water in Hostel	Yes	Adequate
13.	Sport & Recreational Activities in Hostel	Yes	Adequate
14.	Anti Ragging Measures in Hostel	Yes	Adequate
15.	Bio Metric Attendance System in Hostel	Yes	Adequate
16.	Hostel Student Record in Hostel	Yes	Adequate
17.	Cleanliness and hygiene: The hostel is kept clean and hygienic at all times, with regular cleaning and	Yes	Adequate
18.	Daily News Paper & Magazine in Hostel	Yes	Adequate
19.	Visit Register Record by Dean Principal / Teacher and other Concerns authority in Hostel	Yes	Adequate
20.	Hostel Students Parent Meeting minutes Register	Yes	Adequate
21.	Students Health Register in Hostel	Yes	Adequate
22.	The hostel rooms are spacious with natural light and ventilation in Hostel	Yes	Adequate



[Signature]
Principal
Shriram Institute of Nursing School, Paniv
Tal. Malshiras, Dist. Solapur

23	Facility	Available (YES/ NO)	REMARK BRIEF AND SPECIFIC
24	Student is provided with a study table, chair. Wardrobe or Cupboards	Yes	Adequate
25	Available books and Magazines for reading in Hostel	Yes	Adequate
26	Safe disposal of wastes in Hostel	Yes	Adequate
27	Provision For Equipped Sick Room in Hostel	Yes	Adequate
28	Provision For Guest Room in Hostel	Yes	Adequate
29	Laundry facilities: The hostel provides laundry facilities which allows students to wash their clothes and dry it.	Yes	Adequate
30	Counseling services: The hostels have arrangements for providing counseling and support services to students who may need help with academic, personal, or emotional issues.	Yes	Adequate
31	Gymnasium Facility with Equipment in Hostel	-	-
32	Yoga Meditation Facility in Hostel	Yes	Adequate
33	Health Services To students like Vaccination, An annual medical examination, Free medical care during illness.	Yes	Adequate
34	Provision of Hot water Supply in Hostel	Yes	Adequate
35	Independent Generator Supply capacity (mention in KV)	Yes	Adequate
36	ATM Facilities Near hostel	Yes	Adequate
37	Secure Wi-Fi internet connectivity through high end firewall and Hi-speed secured browsing in Hostel	Yes	Adequate
38	Provision for Residential Accommodations / Quarters For Teaching and Non-Teaching Staff Mention brief in Remark	Yes	Adequate
39	Feed Back / Compliant Register in Hostel	Yes	Adequate


Principal

Shriram Institute of Nursing School, Paniv
Tal. Malshiras, Dist. Solapur



HOSTEL

i) Boys Hostel

Details of Boy's Hostel

Sushilkumar Shinde Boy's Hostel, Paniv

There is common hostel for the boys of Shriram Shikshan Sanstha Paniv. In the common main hostel 11 rooms are reserved for the students of the Shriram College of agriculture Paniv. All the rooms are furnished with bed, electricity, fan, chair, and table. The facilities of the Television, Phone call facility is available in the hostel. The facilities of the mess and canteen are made available to students on the main campus and the facility of canteen is also available on the college campus. The college campus is 500 meters from the hostel. The service of the bus is provided to the students by the institute at free of cost.

The separate wardens are appointed for Boys and Girls .It is observed that generally the senior students leaved the hostel and stay in the neighborly areas due to the strict rules and regulation of the institute.

Details of the Boy's:



Boy's Hostel

ii) **Girl's Hostel – Ujjwalatai Shinde Girl's Hostel, Paniv**

There is common hostel for the girls of Shriram Shikshan Santha Paniv. In the common main hostel 10 rooms are reserved for the Girls of the Shriram College of Agriculture Paniv. All the rooms are furnished with bed, electricity, fan, chair and table. The facilities of the Television, Phone call facility is available in the hostel. The facilities of the mess and canteen are made available to girls on the main campus and the facility of canteen is also available on the college campus. The college campus is 500 meters from the hostel. The service of the bus is provided to the students by the institute at free of cost.

The separate wardens are appointed for Boys and Girls.

Girl's Hostel



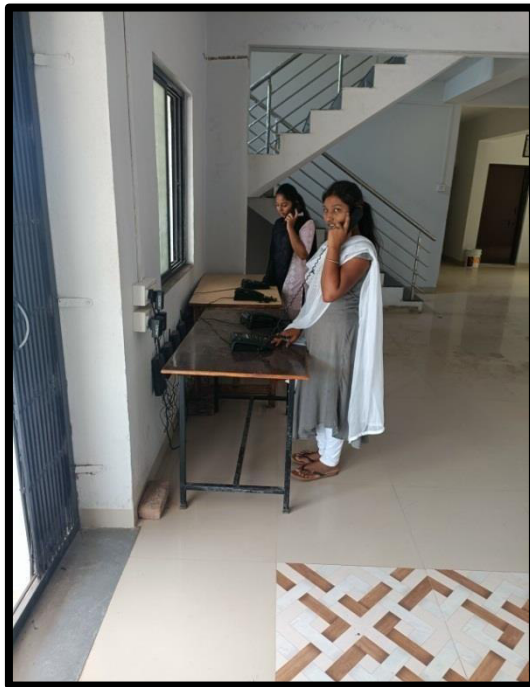
Girls Hostel



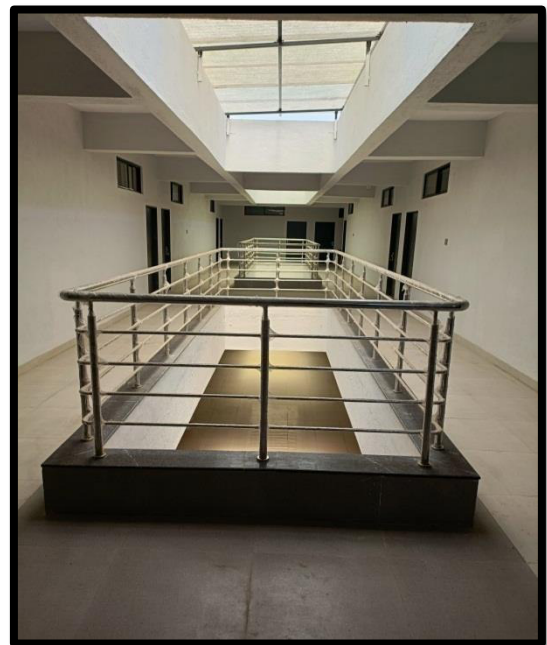
Old Girls Hostel

iii) Facility in Hostel

College hostels are will equipped with all facilities of drinking water, solar water heater etc.



Phone call Facility in Girls Hostel



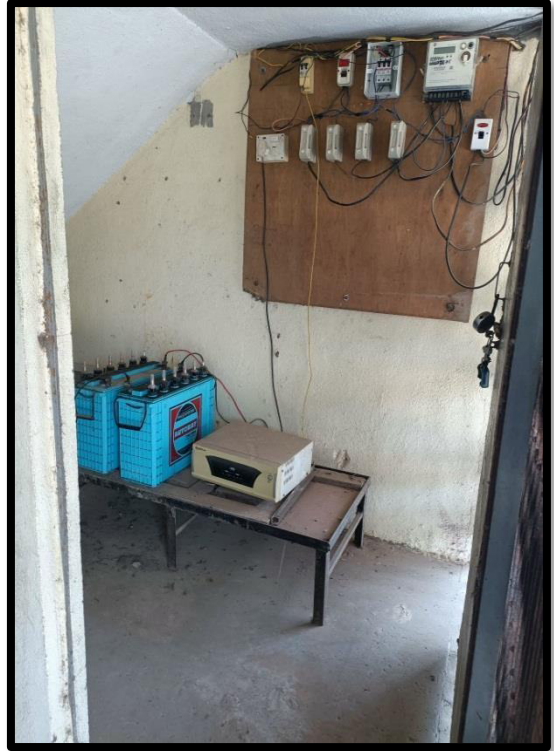
Open Space/ Porch in front of rooms



Wifi Facility



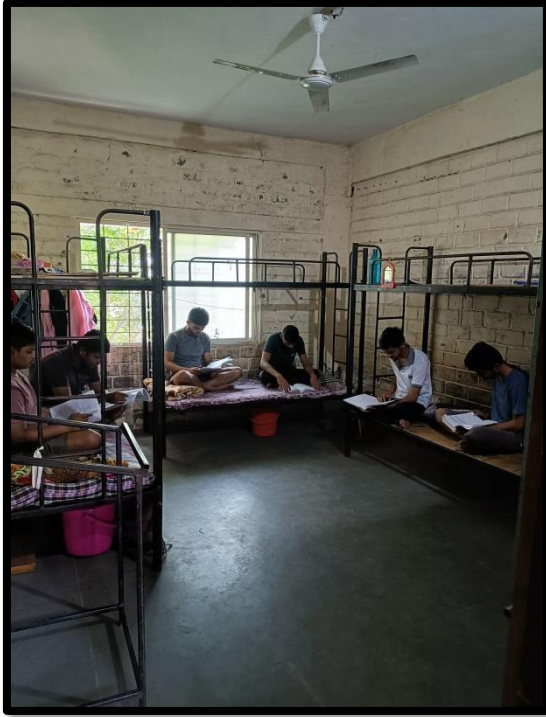
TV Facility



Invertor Facility



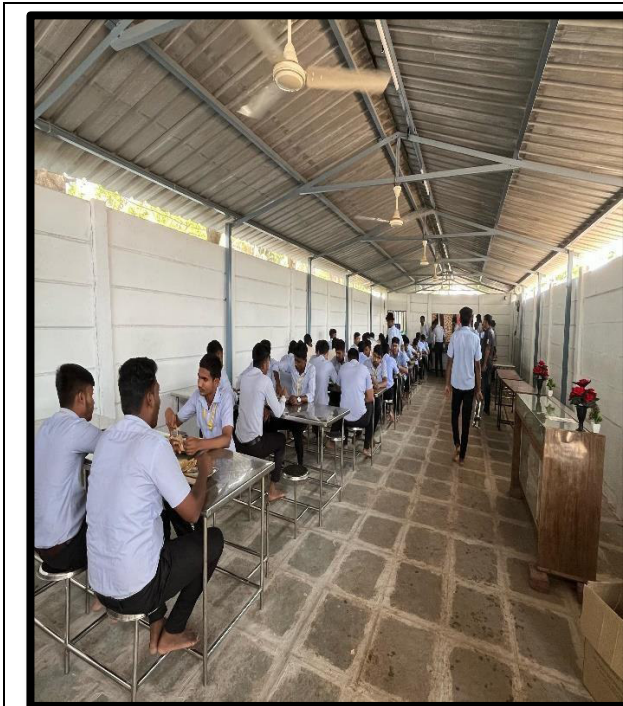
Drinking Water Facility



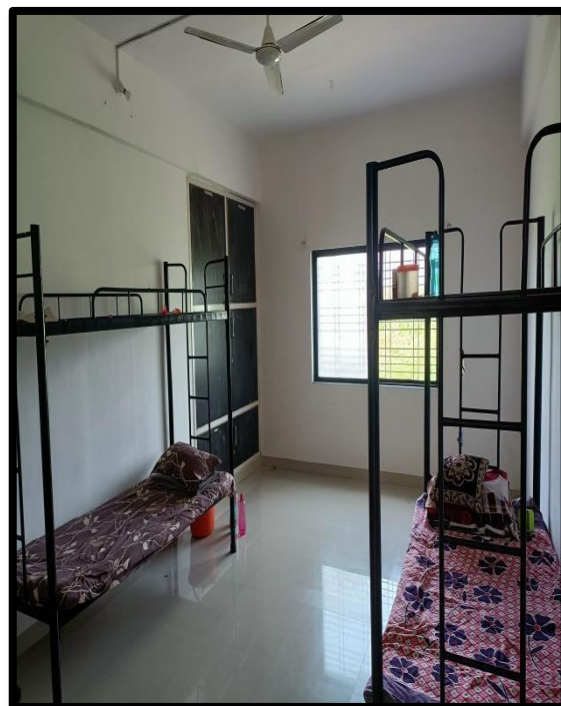
Room Facility



Solar Water Heater Facility



Mess Facility



Furniture and Room Facilities

iv) Distance from College

All hostels are situated in Sanstha Main Campus. The distance from College building is around **500 m.**